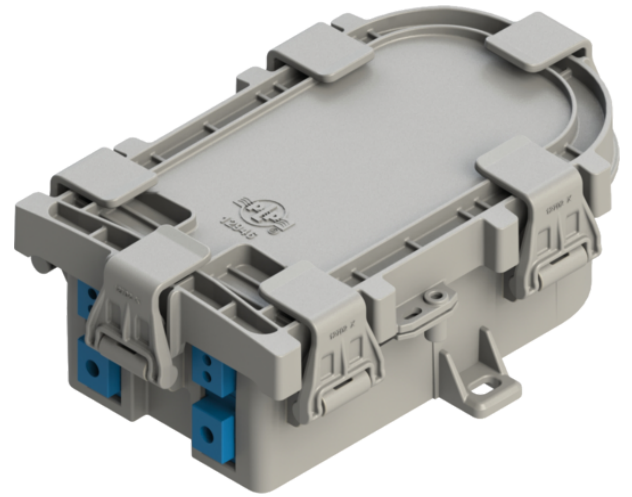


Product name	Coyote STP-MD IP68 incl. 24F splice tray
Product code	84010603
GTIN	
ETIM-Class	EC000762



PRODUCT SPECIFICATIONS

The COYOTE® STP-MD is a tough, compact splice closure which supports straight splice, splice to drop/branch and internal splitter/connector solutions. It's ideal for applications in the FTTx distribution network for splice applications of 24 fibers or less and connectivity solutions. It's also ideal for blown fiber cable and microtube cable applications. It supports use of traditional buffer tube cables.

- Capacity of up to 24 splices
- Capacity of up to 4× SC / 8× LC connectors
- PLC Splitter capability (small format 1:8)
- Aerial or underground application
- Increased water and impact resistance (IP68)
- Grommets system for cables with diameters 2.4–14 mm
- Support for midspan (loop-through) cable
- Intuitive installation

Inputs / Outputs (quantity × range)	4× 2.4–14 mm
Grommets (type and number of used grommets)	Grommets System – 4 pcs
Ingress Protection	IP68
Impact Protection	IK10
Flammability Degree	V0

Material	PC
Color	light gray RAL 7035
Dimensions (H × W × D)	200 × 125 × 70 mm
Weight	0.5 kg
Environment	outdoor
Number of Splices	1–12 / 13–24
Number of Connectors	1–12
Connector Type	LC or SC

Measurements

Length	200 mm
Height	70 mm
Width	125 mm
Weight	850 g